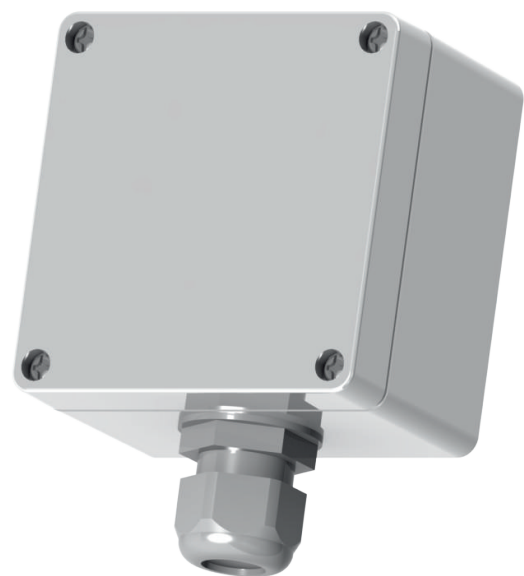


# KONA Industrial Transceiver and Sensor

LoRaWAN™ Battery-Powered Radio Transmitter

The KONA Industrial Transceiver and Sensor is an ideal solution for interfacing automation and control instrumentation to LoRaWAN™ networks. The Industrial Transceiver and Sensor supports up to 3 Analog and Digital inputs enabling remote capture of data, 2 Switched Outputs to activate actuators and different control system components and a configurable RS-232, RS-422 or RS-485 interface with numerous protocols. It also measures and reports temperature, humidity, or other custom features.

The Industrial Transceiver and Sensor utilizes a ruggedized IP-67 polycarbonate enclosure. It allows easy access to terminate the control interface at the point of use. An integrated Li-SOCI2 battery has a lifetime of up to 10 years. The Industrial Transceiver and Sensor supports battery status for easy maintenance via an Application server.



## Applications

Industrial Process Automation

Precision Agriculture

Smart Building Control

Manufacturing

Smart Meters and Energy Grids

Automotive

M2M LoRaWAN Retrofit

## I/O and Interfaces

Input 1	60VDC binary
Input 2	4-20 mA current loop
Input 3	0-10V analog
Output 1	60VDC
Output 2	60V (isolated)
Serial Interface	RS-232 / 422 / 485

### General System Parameters

Operational Temperature	-40°C to +55°C
Operational Voltage	3.6V Nominal
Ingress Protection	IP67
Size	90 x 90 x 60 mm
Weight	50 g
Battery (up to 10 years)	Li-SOCI2

### LoRa Parameters

RF Power	20 dBm (100mW)
RF Sensitivity	up to -140dBm
ISM Band	NA915, EU868, AS923, JP920, CH779
Antenna	Internal Ceramic, UFL connector for External
LoRa Device Class	Class A, B or C (optional DC power)

### Regulatory Compliance

Safety	UL 60950-1 (US/C), IEC 60950-1 (CE)
Environmental	ETSI EN 300 019-2-1, 300 019-2-2 ETSI EN 300 019-2-3, 300 019-2-4
Regulatory	FCC 15.247 RSS-247 FCC 15.209 RSS-Gen

Specifications subject to change without notice.

TEKTELIC Communications is a premier supplier of best-in-class LoRaWAN™ IoT Gateways, Sensors, and custom applications. These elements combined provide a powerful end-to-end solution that can be easily, quickly, and cost effectively deployed to address the most demanding IoT challenges.

For more information please visit [www.tektelic.com](http://www.tektelic.com)

**TEKTELIC**  
communications  
LoRa Alliance Member™